

4<sup>th</sup> Eilat International Educational Course:

# PHARMACOLOGICAL TREATMENT OF EPILEPSY

Israel, September 18-25, 2011

## Announcement

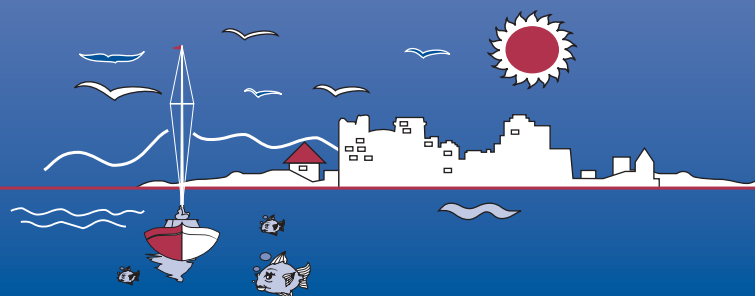
Under the auspices of

ILAE - CEA

ILAE Commission on European Affairs (CEA)



The Hebrew University of Jerusalem, Israel



Dear Colleagues

Following the outstanding success of the past three Eilat International Educational Courses, held in Eilat, September 18-25, 2005, September 2-9, 2007 and September 6-13, 2009, it gives us great pleasure to inform you of the forthcoming 4th Eilat International Educational Course: PHARMACOLOGICAL TREATMENT OF EPILEPSY, which will take place at the Princess Hotel, Eilat, Israel, September 18-25, 2011.

Eilat, located on the Red Sea and southern most tip of Israel, is far from the center of Israel. The Princess Hotel, the venue for our Course, is just outside Eilat, located on the Red Sea overlooking the Red Mountains and Jordan in the distance. Its isolated location is perfect for the intensive, stimulating scientific program we have planned, but close enough for participants to enjoy all that Eilat has to offer.

The Course program is designed for junior registrations (45 years and younger), and we are happy to inform you that a number of bursaries have been made available by the ILAE Commission on European Affairs (CEA) towards partially defraying the cost of flight and accommodation expenses of bursary recipients, who will also have their registration fees waived.

The course is under the auspices of the ILAE Commission on European Affairs (CEA).

We look forward to welcoming you to Eilat in September 2011.

Sincerely



Dr. Svein I. Johannessen  
on behalf of the Organizing Committee

**ORGANIZING COMMITTEE**

**S.I. Johannessen**, Norway, *Chairperson*

**M. Bialer**, Israel

**J.H. Cross**, UK

**A. Guekht**, Russia

**E. Perucca**, Italy

**T. Tomson**, Sweden

**E. Trink**, Austria

# TENTATIVE TIMETABLE

## **Sunday, September 18, 2011**

All day      Arrival and hotel check-in  
Evening      Get-together

## **Monday, September 19, 2011**

Full day      Welcome Address and  
                 Introduction to Course  
                 Sessions  
Evening      Dinner

## **Tuesday, September 20, 2011**

Full day      Sessions  
Evening      Dinner

## **Wednesday, September 21, 2011**

Full day      Sessions  
Evening      BBQ Dinner

## **Thursday, September 22, 2011**

Morning      Sessions  
Afternoon    At leisure  
Evening      Gala Dinner

## **Friday, September 23, 2011**

Full day      Sessions  
Evening      Dinner

## **Saturday, September 24, 2011**

Full day      Sessions  
Evening      Dinner

# PRELIMINARY PROGRAM

## SUNDAY, SEPTEMBER 18, 2011

- All Day      Arrival and hotel check-in  
16:00      Registration and Distribution of Course Material  
20:00      Get-Together, Princess Hotel

## MONDAY, SEPTEMBER 19, 2011

---

08:30 - 09:15      Opening Session

---

### WELCOME ADDRESS

**S.I. Johannessen**, Chair, Organizing Committee, Norway  
**M. Bialer**, CEA Chair, Israel

### INTRODUCTION TO THE COURSE

**T. Tomson**, Organizing Committee, Sweden

### STUDENT INTRODUCTIONS

Each student to present him/herself

---

09:15 - 10:00      **INTRODUCTORY LECTURE**

---

Chairpersons: **A. Guekht**, Russia  
**E. Beghi**, Italy

09:15    DEFINITIONS, CLASSIFICATION AND  
          EPIDEMIOLOGY OF SEIZURES AND EPILEPSY  
**P. Wolf**, ILAE Past President, Denmark

09:45    Discussion

---

10:00 - 13:00      Session I

---

### **THE PHARMACOLOGY OF AEDs**

Chairpersons: **E. Perucca**, Italy  
**C. Johannessen Landmark**, Norway

10:00    MECHANISMS OF ACTION OF AEDs –  
          ANTIEPILEPTIC VS. ANTIEPILEPTOGENIC EFFECTS  
**H.S. White**, USA

10:45    Discussion

11:00    *Coffee Break*

11:30    EXPERIMENTAL MODELS FOR THE DISCOVERY  
          AND TESTING OF AEDs  
**H.S. White**, USA

12:00    Discussion

## MONDAY, SEPTEMBER 19, 2011 (cont.)

---

12:15 - 18:00      Session II

---

### PHARMACOKINETICS AND THERAPEUTIC DRUG MONITORING

Chairpersons: **M. Bialer**, Israel  
**R.H. Levy**, USA

- 12:15 BASIC PRINCIPLES OF PHARMACOKINETICS  
**M. Bialer**, Israel
- 12:45 Discussion
- 13:00 *Lunch*
- 14:30 THE PHARMACOKINETICS OF AEDs: AN OVERVIEW  
**S.I. Johannessen**, Norway
- 15:00 Discussion
- 15:15 PHARMACOKINETICS OF AEDs IN SPECIAL POPULATIONS  
**C. Johannessen Landmark**, Norway
- 15:45 Discussion
- 16:00 *Coffee Break*
- 16:30 PHARMACOKINETIC OPTIMIZATION OF AED THERAPY UTILIZING TDM  
**S.I. Johannessen**, Norway
- 17:00 Discussion
- 19:30 *Dinner*

## TUESDAY, SEPTEMBER 20, 2011

---

09:00 - 12:45      Session III

---

### DRUG INTERACTIONS

Chairpersons: **H.S. White**, USA  
**S.I. Johannessen**, Norway

- 09:00 MECHANISMS AND PREDICTION OF PK INTERACTIONS OF AEDs  
**R.H. Levy**, USA
- 09:45 Discussion
- 10:00 CLINICALLY RELEVANT DRUG INTERACTIONS IN EPILEPSY  
**R.H. Levy**, USA

## TUESDAY, SEPTEMBER 20, 2011 (cont.)

---

09:00 - 12:45      Session III (cont.)    Massada Hall

---

10:30    Discussion

10:45    *Coffee Break*

---

11:15 - 12:45      **GUIDED PK PROBLEM SOLVING  
EXERCISES (IN GROUPS)**

---

Tutors: **M. Bialer**, Israel, **S. I. Johannessen**, Norway,  
**C. Johannessen Landmark**, Norway, **R.H. Levy**, USA,  
**E. Perucca**, Italy, **T. Tomson**, Sweden

12:45    *Lunch*

14:15 - 15:15      **GUIDED POSTER TOUR I**

---

15:15 - 17:30      **DRUG INTERACTIONS (IN GROUPS)**

---

Tutors: **M. Bialer**, Israel, **S.I. Johannessen**, Norway,  
**C. Johannessen Landmark**, Norway, **R.H. Levy**, USA,  
**E. Perucca**, Italy, **T. Tomson**, Sweden

16:30 - 16:45      *Coffee Break*

19:30    *Dinner*

## WEDNESDAY, SEPTEMBER 21, 2011

---

09:00 - 13:00      Session IV

---

### **ASSESSING EFFICACY AND SAFETY (1)**

Chairpersons: **E. Perucca**, Italy  
**T. Tomson**, Sweden

09:00    THE 4 PHASES OF DRUG DEVELOPMENT AND  
GENERIC PRODUCTS OF AEDs  
**M. Bialer**, Israel

09:40    Discussion

09:55    RANDOMIZED CONTROLLED TRIALS  
**M. Baulac**, France

10:25    Discussion

10:40    *Coffee Break*

11:10    SPECIFICITIES OF TRIAL DESIGN FOR CHILDREN  
**J.H. Cross**, UK

## WEDNESDAY, SEPTEMBER 21, 2011 (cont.)

---

09:00 - 13:00      Session IV (cont.)

---

11:40    Discussion

11:55    STATISTICAL PRINCIPLES APPLIED TO DESIGN AND  
ANALYSIS OF CLINICAL TRIALS  
**M. Bialer**, Israel

12:25    Discussion

13:00    *Lunch*

14.30 - 15.30      **GUIDED POSTER TOUR II**

---

15:30 - 17:30      Parallel Student Session

---

### **STUDENTS PRESENT CLINICAL PROBLEM CASES**

Tutors: **A. Covanis**, Greece, **J.H. Cross**, UK,  
**A. Guekht**, Russia, **K. Malmgren**, Sweden,  
**F. Vigevano**, Italy, **P. Wolf**, Denmark

16:00 - 16:30      *Coffee Break*

---

15:30 - 17:30      Parallel Student Session

---

### **STUDENTS PRESENT RESEARCH PROBLEMS**

Tutors: **S.I. Johannessen**, Norway,  
**C. Johannessen Landmark**, Norway,  
**E. Trink**a, Austria, **H.S. White**, USA

16:00 - 16:30      *Coffee Break*

19:30    *Dinner*

## THURSDAY, SEPTEMBER 22, 2011

---

09:00 - 15:45      Session V

---

### **ASSESSING EFFICACY AND SAFETY (2)**

Chairpersons: **K. Malmgren**, Sweden  
**E. Trink**a, Austria

09:00    META-ANALYSIS  
**E. Beghi**, Italy

09:30    Discussion

09:15    REGULATORY AFFAIRS OF AEDs  
**M. Baulac**, France

## THURSDAY, SEPTEMBER 22, 2011 (cont.)

---

09:00 - 15:45      Session V (cont.)

---

09:45 Discussion

10:00 *Coffee Break*

10:30 PROS AND CONS OF UNCONTROLLED OR  
PRAGMATIC STUDIES  
**E. Perucca**, Italy

11:00 Discussion

11:15 ADVERSE EFFECTS OF AEDs  
**E. Trinka**, Austria

11:45 Discussion

12:00 MECHANISMS OF DRUG RESISTANCE  
**S. Shorvon**, UK

12:30 Discussion

12:45 *Lunch*

14:15 - 15:00      GUIDED POSTER TOUR III

---

15:00 - 17:00      **STUDENTS PRESENT CLINICAL  
PROBLEM CASES (IN GROUPS)**

---

Tutors: **A. Covanis**, Greece, **J.H. Cross**, UK,  
**A. Guekht**, Russia, **K. Malmgren**, Sweden,  
**F. Vigevano**, Italy, **P. Wolf**, Denmark

19:30 *Gala Dinner*

## FRIDAY, SEPTEMBER 23, 2011

---

09:00 - 12:30      Session VI

---

### **OPTIMIZING MEDICAL MANAGEMENT (1)**

Chairpersons: **J.H. Cross**, UK  
**S. Shorvon**, UK

09:00 TO TREAT OR NOT TO TREAT? – OPTIMIZING  
DOSAGE  
**T. Tomson**, Sweden

09:45 Discussion

10:00 SELECTION OF DRUGS FOR INITIAL TREATMENT  
OF CHILDREN  
**J.H. Cross**, UK



## FRIDAY, SEPTEMBER 23, 2011 (cont.)

---

09:00 - 12:30      Session VI (cont.)

---

10:30    Discussion

10:45    *Coffee Break*

11:15    SELECTION OF DRUGS FOR INITIAL TREATMENT  
OF ADULTS  
**E. Trinka**, Austria

11:45    Discussion

12:00    CATASTROPHIC CHILDHOOD EPILEPSIES  
**F. Vigevano**, Italy

12:30    Discussion

12:45    *Lunch*

---

14:00 - 16:00      Session VII

---

### **OPTIMIZING MEDICAL MANAGEMENT (2)**

Chairpersons: **A. Covanis**, Greece  
**P. Wolf**, Denmark

14:00    WHAT STRATEGY WHEN THE INITIAL DRUG FAILS  
**E. Beghi**, Italy

14:30    Discussion

14:45    MANAGING THE SEVERELY REFRACTORY PATIENT  
**K. Malmgren**, Sweden

15:15    Discussion

15:30    *Coffee Break*

---

16:00 - 18:00      **JOURNAL CLUB TUTORIAL**

---

Tutors: **A. Covanis**, Greece, **A. Guekht**, Russia,  
**K. Malmgren**, Sweden, **E. Perucca**, Italy  
**S. Shorvon**, UK, **F. Vigevano**, Italy

19:30    *Dinner*

## SATURDAY, SEPTEMBER 24, 2011

---

08:15 - 09:45      Session VIII      Massada Hall

---

### **OPTIMIZING MEDICAL MANAGEMENT (3)**

Chairpersons: **J.H. Cross**, UK  
**A. Guekht**, Russia

08:15 SEIZURE AGGRAVATION BY AEDs  
**E. Perucca**, Italy

08:45 Discussion

09:00 TERMINATION OF AED THERAPY IN SEIZURE FREE  
PATIENTS  
**K. Malmgren**, Sweden

09:30 Discussion

09:45 *Coffee Break*

---

10:15 - 13:15      Session IX

---

### **OPTIMIZING MEDICAL MANAGEMENT (3): SPECIAL SITUATIONS/SPECIAL GROUPS**

Chairpersons: **M. Neufeld**, Israel  
**F. Vigevano**, Italy

10:15 ACUTE REPETITIVE SEIZURES AND STATUS  
EPILEPTICUS  
**S. Shorvon**, UK

10:45 Discussion

11:00 PREGNANCY AND BREAST FEEDING  
**T. Tomson**, Sweden

11:30 Discussion

11:45 PEDIATRICS  
**F. Vigevano**, Italy

12:15 Discussion

12:30 THE ELDERLY  
**M. Neufeld**, Israel

13:00 Discussion

13:15 *Lunch*

19:30 *Dinner*

# CALL FOR ABSTRACTS

## Deadline – May 31, 2011

The target audience for the Course is young neurologists/epileptologists in training. Submitting an abstract is a good opportunity to present your scientific interest and have the work discussed with faculty members and other students during group sessions. Participants wishing to present a paper are requested to submit an abstract to the Secretariat, by e-mail to: [eilatedu@targetconf.com](mailto:eilatedu@targetconf.com)

All accepted abstracts will be scheduled for poster presentation. Inclusion of abstracts in the scientific program is dependent on payment of registration fees

## INSTRUCTIONS FOR THE PREPARATION OF ABSTRACTS

1. Abstracts must be submitted in English.
2. Title should be typed in CAPITAL LETTERS, bold and left aligned.
3. Presenting author's name should be underlined and bolded. If submitting more than one abstract, each abstract must be sent as a separate e-mail message and the title should indicate that these are separate abstracts, i.e. JILL BROWN ABSTRACT 1; JILL BROWN ABSTRACT 2.
4. The entire abstract should be approx. 250 words, including, title, author(s), institution(s), country and acknowledgements.
5. Recommended font is Times New Roman, size 12 points, single spacing.
6. No end-notes or frames are acceptable.
7. Please note: Faxed abstracts will not be accepted.

## COURSE SECRETARIAT

For any additional information, please contact the Secretariat:  
Target Conferences

P.O. Box 29041, Tel Aviv 61290, Israel

Tel: +972 3 5175150

Fax: +972 3 5175155

email: [eilatedu@targetconf.com](mailto:eilatedu@targetconf.com)

# GENERAL INFORMATION

## LOCATION

Princess Hotel, Eilat, Israel is the Course venue.

## LANGUAGE

The Course will be conducted in English

## REGISTRATION FEES

**July 15, 2011**

	Before	After
Participant	US\$ 800	US\$ 900

Registration fees for participants include entrance to all sessions, program and course kit, lunches and dinners as of evening of September 18 up to and including September 24, as well as participation in the social program.

\*Registration fees apply to participants taking accommodation at the Princess Hotel. Should participants make reservations elsewhere, there will be a supplement to the registration fee of US\$ 250 per person.

If you are interested in bringing a partner, a registration fee of US\$ 650 for your partner will be charged in addition to accommodation.

## APPLICATION FOR BURSARIES

Bursaries will be made available to young scientists (45 years and younger). The bursary will cover free accommodation in a shared room, waiver of course registration fee and a travel bursary of up to US\$ 500.

Potential candidates are kindly requested to submit

- a letter of application
- a CV
- a recommendation letter from the head of their department or the head of their research lab
- if possible, an abstract based on research work

These documents should be forwarded to the Course Secretariat by email to [eilatedu@targetconf.com](mailto:eilatedu@targetconf.com) and will be evaluated by the Course Organizing Committee. The number of bursaries is restricted, we therefore recommend that candidates submit their applications as soon as possible.

Deadline for Bursary Submission: **January 15, 2011**

## PAYMENT

Payment for registration fees must be paid directly to the Secretariat and can be made by cheque, bank transfer\* or credit card. Kindly refer to the registration form for details.

\*Please ensure that the name/s of the participant/s and International Course are clearly stated on the bank transfer. Bank charges are the responsibility of the payee and should be paid at source in addition to the registration fees.

## **GENERAL INFORMATION (cont.)**

### **CANCELLATION POLICY**

Our refund policy is based upon receiving notification as follows:

Notification received prior to July 15, 2011 Full refund less US\$ 100 handling fee.

Notification received prior to August 20, 2011: 50% refund.

Notification received after August 20, 2011, No refund.

### **LETTER OF INVITATION**

Upon request, the Secretariat will send a personal invitation to participate in the Course. It should be understood that such an invitation is only meant to assist participants in raising travel funds or obtaining a visa and does not represent a commitment on the part of the Organizing Committee.

### **CLIMATE AND CLOTHING**

The weather in Eilat in September is hot and dry. Clothing is informal for all occasions. Don't forget your sunglasses, swimwear, hat and comfortable walking shoes.

## **TRAVEL AND ACCOMMODATION**

Target Conferences Ltd.

P.O. Box 29041, Tel Aviv, Israel

Tel: +972 3 5175150

Fax: +972 3 5175155

email: [target@targetconf.com](mailto:target@targetconf.com)

Target Conferences is the official travel agent of the 4th Eilat International Educational Course:

PHARMACOLOGICAL TREATMENT OF EPILEPSY and will be offering special reduced rates for accommodation and conference tours.

Hotel space has been blocked by Target Conferences at the Princess Hotel.

Single room (one person) US\$ 190

Double room (two people) US\$ 220

Rates are per night, per room, and include Israeli buffet style breakfast and service charge.

### **NOTE**

Check-in to the Princess Hotel Eilat is usually at 14:00 hours, and check-out at noon, but on a Saturday check-out time is officially after Sabbath (about 20:00 hours).

### **HOW TO BOOK**

In order to benefit from the special rate, kindly ask your Travel Agent to contact TARGET CONFERENCES, or send enclosed Accommodation Form with the required deposit to Target Conferences, at your earliest convenience.

## **PAYMENT**

Payment for accommodation and tours reserved directly by Target Conferences is to be made (less deposit) upon arrival at the Target Conferences Hospitality Desk at the venue, with a 3% surcharge. If Target Conferences receives full payment for all services requested prior to arrival, there will be no surcharge. Target Conferences accepts travelers cheques, Eurocheques (in the currency of the issuing country) and major credit cards.

## **AIR TRAVEL**

It is recommended to book your international air travel to/from Ben Gurion International Airport (Tel Aviv) with your local travel agent and/or on the internet, and to consult with or book your domestic flights to/from Eilat with a Target Conferences' Representative.

## **TRANSPORT TO/FROM BEN GURION INTERNATIONAL AIRPORT AND SDE DOV DOMESTIC AIRPORT (TEL AVIV) FOR FLIGHTS TO EILAT**

If you have booked a connecting domestic flight departing from Ben Gurion airport, there are free shuttles between the two terminals at the airport. Don't forget to allow at least 2.5 hours between the two flights. Taxis to Sde Dov are available from the airport at all times. For these domestic flights please allow 3-3.5 hours between connecting flights.

## **TRANSPORTATION TO/FROM CONFERENCE VENUE**

Taxi fares between the domestic airport in Eilat and the Princess Hotel are very reasonable (about US\$10 or less).

## **CANCELLATION OF ACCOMMODATION**

Up to 90 days prior to arrival – full refund of deposit, less bank charges.

Up to 45 days prior to arrival – cancellation charge of US\$ 150 per room.

Thereafter: no refund on deposit.

## **PRE and POST COURSE TOURS (optional)**

Information regarding Pre and Post Course Tours will be available on the course website:

[www.eilat-aeds.com](http://www.eilat-aeds.com) or by contacting Target Conferences,

P.O. Box 29041, Tel Aviv, Israel,

Tel: +972 3 5175150, Fax: +972 3 5175155

email: [target@targetconf.com](mailto:target@targetconf.com)

4th Eilat International Educational Course:  
**PHARMACOLOGICAL TREATMENT OF EPILEPSY**  
Israel, September 18-25, 2011

## REGISTRATION FORM

Please TYPE or PRINT in BLOCK LETTERS and AIRMAIL or  
FAX to: Target Conferences, P O Box 29041, Tel Aviv 61290, Israel  
Tel: +972 3 5175150, Fax: +972 3 5175155

Family Name \_\_\_\_\_

First Name/s \_\_\_\_\_

Title:  Prof.  Dr.  Mr.  Ms.

Full Mailing Address \_\_\_\_\_  
\_\_\_\_\_

City \_\_\_\_\_ State \_\_\_\_\_

Zip Code \_\_\_\_\_ Country \_\_\_\_\_

Tel \_\_\_\_\_ Fax \_\_\_\_\_

e-mail \_\_\_\_\_

Accompanying Person:

Family Name \_\_\_\_\_ First Name \_\_\_\_\_

### REGISTRATION FEES

**July 15, 2011**

	Before	After
Participant	<input type="checkbox"/> US\$ 800	<input type="checkbox"/> US\$ 900
Accompanying person	<input type="checkbox"/> US\$ 650	<input type="checkbox"/> US\$ 660

Enclosed please find **cheque** in the amount of US\$ \_\_\_\_\_  
payable to EILAT  
cheque no. \_\_\_\_\_ Bank \_\_\_\_\_ or

I have made a **bank transfer** of US\$ \_\_\_\_\_ as follows:  
Bank Leumi, North Branch, 87 Ben Yehuda Street, Tel Aviv, Israel  
to account number **804-213993/74**  
IBAN # IL 410108040000021399374 (Copy of transfer enclosed) or

Charge US\$ \_\_\_\_\_ to **credit card** as below:

American Express  Diners Club  MasterCard  Visa

Credit Card No. \_\_\_\_\_ Expiry Date \_\_\_\_\_

Last three numbers on back of card \_\_\_\_\_

Signature \_\_\_\_\_ Date \_\_\_\_\_





**4th Eilat International Educational Course:  
PHARMACOLOGICAL TREATMENT OF EPILEPSY  
Israel, September 18-25, 2011**

**ACCOMMODATION FORM**

Please **TYPE** or **PRINT** in **BLOCK LETTERS** and AIRMAIL or FAX to: Target Conferences, P O Box 29041, Tel Aviv 61290, Israel  
Tel: +972 3 5175150, Fax: +972 3 5175155

Family Name \_\_\_\_\_

First Name/s \_\_\_\_\_

Title:  Prof.  Dr.  Mr.  Ms.

Full Mailing Address \_\_\_\_\_  
\_\_\_\_\_

City \_\_\_\_\_ State \_\_\_\_\_

Zip Code \_\_\_\_\_ Country \_\_\_\_\_

Tel \_\_\_\_\_ Fax \_\_\_\_\_

e-mail \_\_\_\_\_

I/ We require accommodation for the Educational Course at the Princess Hotel, as follows:

Check in date \_\_\_\_\_ Check out date \_\_\_\_\_ No. of nights \_\_\_\_\_

Single Occupancy  Double Occupancy\*

\* I will share my room with \_\_\_\_\_

Check in date \_\_\_\_\_ Check out date \_\_\_\_\_ No. of nights \_\_\_\_\_

Important for organizational purposes, kindly complete/send later once known:

**Flight details:**

Arrival date: \_\_\_\_\_ Airline/Flight No: \_\_\_\_\_ at \_\_\_\_\_ hours

Departure date: \_\_\_\_\_ Airline/Flight No: \_\_\_\_\_ at \_\_\_\_\_ hours

A deposit of US\$200 per room must accompany all requests.

Payment by:

Cheque, payable to Target Conferences Ltd., herewith enclosed.

Bank transfer of US\$ \_\_\_\_\_

made out to Target Conferences Ltd,

Bank Leumi, North Branch, 87 Ben Yehuda Street, Tel-Aviv, Israel

Account number: 804-341500/08

IBAN # IL 850108040000034150008 (Copy of transfer enclosed)

Credit card, charge US\$ \_\_\_\_\_ as follows:

American Express  Diners Club  MasterCard  Visa

Credit Card No. \_\_\_\_\_ Expiry Date \_\_\_\_\_

Last three numbers on back of card \_\_\_\_\_

Signature \_\_\_\_\_ Date \_\_\_\_\_



## **COURSE SECRETARIAT**

For any additional information, please contact the Secretariat:

Target Conferences

P.O. Box 29041, Tel Aviv 61290, Israel

Tel: +972 3 5175150

Fax: +972 3 5175155

email: [eilatedu@targetconf.com](mailto:eilatedu@targetconf.com)

VISIT OUR WEBSITE:

[www.eilat-aeds.com](http://www.eilat-aeds.com)

